

Semi-Lagrangian relaxation*

C. Beltran[†] C. Tadonki[‡] J.-Ph. Vial[§]

September 14, 2004

Abstract

Lagrangian relaxation is commonly used in combinatorial optimization to generate lower bounds for a minimization problem. We propose a modified Lagrangian relaxation which used in (linear) combinatorial optimization with equality constraints generates an optimal integer solution. We call this new concept semi-Lagrangian relaxation and illustrate its practical value by solving large-scale instances of the p-median problem.

Keywords: Lagrangian relaxation, combinatorial optimization, p-median problem, ProximalACCPM

1 Introduction

Lagrangian relaxation (LR) is commonly used in combinatorial optimization to generate lower bounds for a minimization problem (Geoffrion, 1974). For a given problem, there may exist different Lagrangian relaxations. The higher the optimal value of the associated Lagrangian dual function, the stronger the relaxation and the more useful in solving the combinatorial problem in a branch-and-bound framework (Guignard and Kim, 1987; Lemaréchal and Renaud, 2001). Ideally, one would like to work with the strongest possible Lagrangian, one that closes the integrality gap. Are there combinatorial problems for which such a Lagrangian relaxation exists, and if yes, are the associated subproblems computationally tractable?

In this paper we give a positive answer to the first question: we propose a new relaxation, which we call semi-Lagrangian relaxation (SLR), that closes the integrality gap for any (linear) combinatorial problem with equality constraints. Regarding the second question, we also give a positive answer for the p-median problem, a well-studied combinatorial problem (Kariv and Hakimi, 1979; Briant and Naddef, 2004). For this integer programming problem, the standard Lagrangian relaxation consists in relaxing the equality constraints that ensure that each “customer” is assigned to exactly one median. This yields a maxmin optimization problem, in which the binding equality constraints are no longer present. The inner minimization problem is thus separable

*This work was partially supported by the Fonds National Suisse de la Recherche Scientifique, grant 12-57093.99 and the Spanish government, MCYT subsidy dpi2002-03330.

[†]cesar.beltran@hec.unige.ch, Logilab, HEC, University of Geneva, Switzerland.

[‡]claudetadonki@unige.ch, Centre Universitaire Informatique, University of Geneva, Switzerland.

[§]jean-philippe.vial@hec.unige.ch, Logilab, HEC, University of Geneva, Switzerland.

and easy. Unfortunately, the Lagrangian relaxation yields the same optimal value as the linear relaxation. To strengthen the standard Lagrangian relaxation, we insert into the inner minimization problem a weaker form of the equality constraint, as a “less than or equal” inequality. We call this process, a semi-Lagrangian relaxation. It is quite general, as it applies to any problem with equality constraints.

This new relaxation has some interesting properties. The more useful one, is that for large enough Lagrange multipliers, the semi-Lagrangian relaxation has the same optimal solution as the original problem: it closes the integrality gap. Unfortunately, the subproblem associated to these large multipliers may be as difficult as the original problem itself. However, for the p -median problem, and for some others like the set partitioning problem (Balas and Padberg, 1976), the inner problem is very easy to solve when the Lagrange multipliers are small. In the p -median problem, the subproblem is a variant of the uncapacitated facility location problem, in which only “profitable” customers must be assigned to a facility. This problem is NP-hard, but when the Lagrange multipliers are small, it turns out that very few customers are “profitable” and the subproblem becomes easy. This suggests a process of approaching the set of optimal Lagrangian multipliers with multiplier values small enough to keep the inner problem relatively easy until it produces an integer optimal solution.

We show that this view is implementable on the p -median problem. We apply the new scheme to a collection of large-scale p -median instances already studied in (Avella et al., 2003; Hansen et al., 2001). This collection includes a large number of instances, most of them of very large dimension. For the sake of more meaningful comparisons, we separate these instances into two categories. The difficult instances are those for which the CPU time reported in (Avella et al., 2003) exceeded 28000 seconds. There are ten of those, and only four of them were solved to optimality in the mentioned paper. The 33 remaining instances are easier: they were all solved to optimality with a CPU less than 7500 seconds.

With the new algorithm, we are able to improve the best known dual bounds for five of the six nonsolved difficult problems (one of them is solved up to optimality by the new method). We also improve the computation time on a few difficult problems by a significant amount. On the other hand, we solve to optimality 28 of the easier instances, but our method is 3.68 times slower on average. On the 5 remaining easier problems, the search is stopped when the computing time exceeds either 10 times the computing time in (Avella et al., 2003) or 30,000 seconds. The optimality gaps at the stopping time range from 99.44% to 99.98%.

The new approach does not improve Avella’s results, in our opinion, one of the best reported results on the p -median problem from a computational point of view. This is not surprising, since (Avella et al., 2003) exploits the combinatorial structure of the p -median problem to construct efficient cuts (lifted odd-hole inequalities, cycle inequalities, etc.) to be used in a sophisticated branch-cut-and-price (BCP) algorithm. In contrast our simpler method is general and does not resort to a branch and bound scheme. Of course, the integer programming solver (CPLEX in our case) that handles the semi-Lagrangian subproblems relies on sophisticated branch and bound schemes, but the remarkable fact is that this solver cannot handle the p -median problems in their initial formulation, unless they have small dimension. Since the semi-Lagrangian relaxed problem is a variant of the uncapacitated facility location problem, usually very sparse, its special structure could be exploited to improve the solution time: any such

improvement will directly translate into the same improvement in the overall procedure. Finally, we believe that the new approach opens new directions of research.

The paper is organized as follows: In section 2 we introduce the semi-Lagrangian relaxation (concept and properties) for the case of linear integer programming problems. In sections 3 and 4 we apply the semi-Lagrangian relaxation to the p-median problem. In section 5 we test the semi-Lagrangian relaxation by solving large scale p-median problems. Conclusions are given in section 6.

2 Semi-Lagrangian relaxation

Consider the primal problem

$$\begin{aligned} \min_x \quad & c^T x \\ \text{s.t.} \quad & Ax = b, \end{aligned} \tag{1a}$$

$$x \in X \cap \mathbb{N}^n. \tag{1b}$$

Let z^* be the optimal value of this problem. We make the working assumption that all components in A , b and c are non-negative and that $X \subset \mathbb{R}^n$ is a cone (thus, $0 \in X$). Note that, since A and b are non-negative, the set $S = \{x \in X \cap \mathbb{N}^n \mid Ax \leq b\}$ is bounded (finite).

The standard Lagrangian relaxation consists in relaxing the (linear) equality constraints and solve the dual problem

$$\max_u \mathcal{L}_{LR}(u), \tag{2}$$

where

$$\mathcal{L}_{LR}(u) = b^T u + \min_x \{(c - A^T u)^T x \mid x \in S\}. \tag{3}$$

The optimal solution of the Lagrangian dual yields a lower bound for the original problem

$$z_{LR} \leq z^*.$$

Our semi-Lagrangian relaxation consists in relaxing the equality constraint as in (3), but keeping in the meantime a weaker form of the equality constraint in the oracle (subproblem). Namely,

$$\max_u \mathcal{L}_{SLR}(u), \tag{4}$$

where

$$\mathcal{L}_{SLR}(u) = b^T u + \min_x \{(c - A^T u)^T x \mid Ax \leq b, x \in S\}. \tag{5}$$

The oracle (5) is more constrained than (3). Its minimum value is thus higher

$$z_{LR} \leq z_{SLR} \leq z^*.$$

The semi-Lagrangian relaxation is thus stronger than the Lagrangian relaxation. However, solving the oracle (5) may be (much) more difficult than solving (3). Actually, the difficulty in solving (5) depends on the particular values of u . We shall consider two extreme cases. First, assume that $u = 0$. Since $c \geq 0$ and $0 \in S$ is feasible to $Ax \leq b$,

then 0 is a trivial solution to (5). The second case occurs when all components of u are positive and very large. If we write (5) as

$$\mathcal{L}_{SLR}(u) = \min_x \{c^T x + (b - A^T x)^T u \mid Ax \leq b, x \in S\}$$

the very large penalty on $b - A^T x$ imposes to chose x such that $Ax \geq b$. Since x is explicitly constrained by $Ax \leq b$, the optimal solution of (5) meets the original constraint $Ax = b$. Solving the oracle may be just as difficult as solving the original problem (2). This is the bad side of the situation, but it also has a positive side: it gives indication that the optimal solution of (4) may be strictly bigger than (2), thereby reducing the integrality gap.

We want to argue that there may exist intermediary situations, where the oracle (5) is not too difficult to solve, and thus is practical. To this end, we cast our previous discussions into formal propositions.

Theorem 1 *The semi-Lagrangian relaxation closes the integrality gap. In other words, the optimal value of problem (4) is the same as (1).*

Proof: Since $S = \{x \in X \cap \mathbb{N}^n \mid Ax \leq b\}$ is bounded, the Lagrangian dual function $\mathcal{L}_{SLR}(u)$ may be written as the minimum of finitely many linear forms. Let x^1, \dots, x^N be the set of integer points in S . Then,

$$\mathcal{L}_{SLR}(u) = \min_{k=1, \dots, N} \{c^T x^k - (Ax^k - b)^T u\}.$$

We may write

$$z_{SLR} = \max_u \mathcal{L}_{SLR}(u) = \max_{u, z} \{z \mid z \leq c^T x^k - (Ax^k - b)^T u, k = 1, \dots, N\}.$$

By duality

$$z_{SLR} = \min_{\lambda} \left\{ \sum_{k=1}^N \lambda_k c^T x^k \mid \sum_{k=1}^N \lambda_k (b - Ax^k) = 0, \sum_{k=1}^N \lambda_k = 1, \lambda \geq 0 \right\}.$$

Let λ^* be an optimal solution for the right-hand side. Without loss of generality, we can assume that the first p components of λ^* are positive and the remaining ones are zero. Considering that $b - Ax^k \geq 0$ for $k = 1, \dots, p$ and that $\sum_{k=1}^N \lambda_k^* (b - Ax^k) = \sum_{k=1}^p \lambda_k^* (b - Ax^k) = 0$, we have that $Ax^k - b = 0$, that is, x^k is feasible for (1) ($k = 1, \dots, p$). Let us further assume that

$$c^T x^1 \leq c^T x^2 \leq \dots \leq c^T x^p.$$

Clearly $z_{SLR} = \sum_{k=1}^p \lambda_k^* c^T x^k \geq c^T x^1$. Since x^1 is feasible to (1) then $c^T x^1 \geq z^*$. Furthermore, by the weak duality $z_{SLR} \leq z^*$. Hence $z_{SLR} = z^*$. \blacksquare

Theorem 1 shows that the suggested oracle is the strongest possible relaxation. The next theorem and its corollary show that the optimal set of $\mathcal{L}_{SLR}(u)$ is unbounded.

Theorem 2 *The function \mathcal{L}_{SLR} is monotonically non decreasing.*

Proof: Let $u \geq u'$ and let $x(u)$ and $x(u')$ be optimal solutions of (5) at u and u' respectively. Let us show that $\mathcal{L}_{SLR}(u) \geq \mathcal{L}_{SLR}(u')$. Using the fact that $Ax(u) \leq b$ and that $x(u')$ minimizes $c^T x + (b - Ax)^T u'$, we have

$$\begin{aligned} \mathcal{L}_{SLR}(u) &= c^T x(u) + (b - Ax(u))^T u, \\ &= c^T x(u) + (b - Ax(u))^T u' + (b - Ax(u))^T (u - u'), \\ &\geq c^T x(u) + (b - Ax(u))^T u', \\ &\geq c^T x(u') + (b - Ax(u'))^T u' = \mathcal{L}_{SLR}(u'). \end{aligned}$$

■

Theorem 2 induces a domination criterion in the set of optimal multipliers u . Formally, we state the following corollary.

Corollary 2.1 *Let u^* be an optimal solution of (4). The optimal set contains the unbounded set $\{u \mid u \geq u^*\}$.*

We can define the set of non dominated optimal solution as the Pareto frontier of the optimal set U^* . Let us picture in Fig. 1 the set U^* and a possible trajectory of multipliers from the origin to the set.

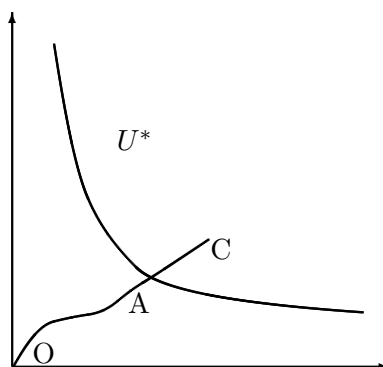


Figure 1: Path to the optimal set of dual multipliers

We observe that we can choose an optimal solution x in the oracle (5) with the property that $x_j = 0$ if the reduced cost $(c - A^T u)_j$ is nonnegative. At the origin O ($u = 0$) of Fig. 1, the oracle has the trivial solution $x = 0$. At point C , far inside the optimal set, all reduced costs are negative. The oracle is difficult, since it is essentially equivalent to the original problem. The difficulty in solving the oracle increases as one progresses along the path OAC . At A , close to the origin O , the oracle problem involves only few variables and might thus be easy.

The key issue is whether the oracle (5) is easy enough to solve at points on the Pareto frontier of U^* and near it. If yes, we have at hand a procedure to find an exact solution of the original problem by solving a sequence of moderately difficult problems. Let us show here that if u^* is an optimal point one can get an optimal solution to (1) by solving (5) at a point in the vicinity of u^* .

Theorem 3 *Let u^* be an optimal solution of the semi-Lagrangian relaxation problem (4). Let $x(u')$ be an optimal solution for the oracle problem (5) at u' . Then $x(u')$ is optimal to the original problem (1) if one of the two conditions holds:*

- i) $x(u')$ satisfies (1a).*
- ii) $u' > u^*$.*

Proof: Condition *i*) is trivial. To prove *ii*), we just have to show that $u' > u^*$ implies *i*). Note that $x(u')$ is optimal for the oracle problem (5) at u' , but suboptimal at u^* . We also have, by Theorem 2, that u' is optimal; thus, $c^T x(u') + (b - A^T x(u'))^T u' = z^*$. In consequence,

$$\begin{aligned} z^* &= c^T x(u^*) + (b - A^T x(u^*))^T u^* \\ &\leq c^T x(u') + (b - A^T x(u'))^T u^* \\ &= c^T x(u') + (b - A^T x(u'))^T u' + (b - A^T x(u'))^T (u^* - u') \\ &= z^* + (b - A^T x(u'))^T (u^* - u'). \end{aligned}$$

Thus, $(b - A^T x(u'))^T (u^* - u') = 0$ and, since $u' > u^*$, one has $A^T x(u') = b$, which by *i*) proves the theorem. ■

The above discussion suggests a procedure to solve the original problem (1) via a semi-Lagrangian relaxation. The dual problem in the semi-Lagrangian relaxation is a concave non-differentiable one that can be solved by a specialized method of the cutting plane type. The difficulty in this approach is that the oracle is potentially difficult, possibly as difficult as the original problem (1). To make the overall procedure workable, the oracle should be solved exactly. An enumeration technique or an advanced commercial solver must be used. The cutting plane method must therefore be particularly efficient so as to require as few solvings of (5) as possible. In that respect, a good starting point might be of a great help. The natural suggestion is to use the optimal point of the dual problem of the standard Lagrangian relaxation (see section 5.1)

$$\max_u \{b^T u + \min_x \{(c - A^T u)^T x \mid x \in X\}\}.$$

3 Semi-Lagrangian relaxation for the p-median problem

In the p-median problem the objective is to open p ‘facilities’ from a set of m candidate facilities relative to a set of n ‘customers’, and to assign each customer to a single facility. The cost of an assignment is the sum of the shortest distances c_{ij} from a customer to a facility. The distance is sometimes weighted by an appropriate factor, e.g., the demand at a customer node. The objective is to minimize this sum. Applications of the p-median problem can be found in cluster analysis (Mulvey and Crowder, 1979; Hansen and Jaumard, 1997), facility location (Christofides75, 1975), optimal diversity management problem (Briant and Naddef, 2004), etc. The p-median problem can be formulated as follows

$$\min_{x,y} \quad \sum_{i=1}^m \sum_{j=1}^n c_{ij} x_{ij} \tag{6a}$$

$$\text{s.t.} \quad \sum_{i=1}^m x_{ij} = 1, \quad \forall j, \tag{6b}$$

$$\sum_{i=1}^m y_i = p, \quad (6c)$$

$$x_{ij} \leq y_i, \quad \forall i, j, \quad (6d)$$

$$x_{ij}, y_i \in \{0, 1\}, \quad (6e)$$

where $x_{ij} = 1$ if facility i serves the customer j , otherwise $x_{ij} = 0$ and $y_i = 1$ if we open facility i , otherwise $y_i = 0$.

The p-median is a NP-hard problem (Kariv and Hakimi, 1979) for which polyhedral properties and some families of valid inequalities have been studied in (de Farias, 2001; Avella and Sassano, 2001). For this reason the p-median problem has been solved basically by heuristic methods, such as the variable neighborhood decomposition method (Hansen et al., 2001), or by enumerative methods, such as the branch-and-cut approach (Briant and Naddef, 2004) and the branch-cut-and-price approach (Avella et al., 2003), which as far as we know, represents the state of the art regarding exact solution methods to solve the p-median problem.

Following the ideas of the preceding section, we formulate the standard Lagrangian relaxation of the p-median problem, and two semi-Lagrangian relaxations.

3.1 Standard relaxation

The constraints (6b) and (6c) are both relaxed to yield the dual problem

$$\max_{u,v} \mathcal{L}_1(u, v)$$

and the oracle

$$\mathcal{L}_1(u, v) = \min_{x,y} \sum_i \left(\sum_j (c_{ij} - u_j) x_{ij} + v y_i \right) \quad (7a)$$

$$\text{s.t.} \quad x_{ij} \leq y_i, \quad \forall i, j, \quad (7b)$$

$$x_{ij}, y_i \in \{0, 1\}. \quad (7c)$$

We name *Oracle 1* this oracle; it is trivially solvable. Its optimal solution is also optimal for its linear relaxation. Consequently, the optimum of \mathcal{L}_1 coincides with the optimum of the linear relaxation of (6).

It is not possible to make this relaxation stronger by keeping the constraint on the number of medians (6c) in the oracle. Indeed, one can easily check that the linear relaxation of the ensuing oracle has an integer optimal solution. Therefore, keeping the constraint (6c) in the oracle, does not make the Lagrangian relaxation stronger than \mathcal{L}_1 .

3.2 Partial semi-Lagrangian relaxation

To strengthen \mathcal{L}_1 we introduce the constraints $\sum_i x_{ij} \leq 1, j = 1, \dots, n$ in the oracle. We obtain the dual problem

$$\max_{u,v} \mathcal{L}_2(u, v)$$

and the new oracle

$$\mathcal{L}_2(u, v) = \min_{x, y} \sum_{ij} (c_{ij} - u_j) x_{ij} + v \sum_i y_i \quad (8a)$$

$$\text{s.t.} \quad \sum_i x_{ij} \leq 1, \quad \forall j, \quad (8b)$$

$$x_{ij} \leq y_i, \quad \forall i, j, \quad (8c)$$

$$x_{ij}, y_i \in \{0, 1\}. \quad (8d)$$

We name *Oracle 2* this oracle. In view of the cost component in the y variables in the objective (9a), the problem resembles the well-known uncapacitated facility location (UFL) problem. However, the oracle differs from UFL on one important point. The standard cover (all customers must be assigned to one facility) is replaced by a subcover inequality (8b). It implies the necessary condition that a customer j may be served by facility j only if the reduced cost $c_{ij} - u_j$ is negative. This fact will be used extensively in the procedure to solve the oracle: all variables x_{ij} with a non-negative cost are automatically set to zero, thereby reducing the size of the problem to solve dramatically.

The oracle for \mathcal{L}_2 is more difficult than for \mathcal{L}_1 . The optimal value for \mathcal{L}_2 may be larger than for \mathcal{L}_1 when there exists an integrality gap between the optimal integer solution of (6) and its linear relaxation. On the other hand, the odds are that solving \mathcal{L}_2 is NP-hard.

3.3 Semi-Lagrangian relaxation

If the solution of the strong oracle problem evaluated at the optimum of \mathcal{L}_2 is feasible for (6), then this solution is optimal for (6). In our numerical experiments, it has been the case on many instances. On other instances, the solution produced by the oracle just violates the constraint (6c) on the number of medians. To cope with this difficulty, we consider the strongest relaxation,

$$\max_{u, v} \mathcal{L}_3(u, v)$$

with the new oracle

$$\mathcal{L}_3(u, v) = \min_{x, y} \sum_{ij} (c_{ij} - u_j) x_{ij} + v \sum_i y_i \quad (9a)$$

$$\text{s.t.} \quad \sum_i x_{ij} \leq 1, \quad \forall j, \quad (9b)$$

$$\sum_i y_i \leq p, \quad (9c)$$

$$x_{ij} \leq y_i, \quad \forall i, j, \quad (9d)$$

$$x_{ij}, y_i \in \{0, 1\}. \quad (9e)$$

We name *Oracle 3* this oracle. In view of (9c), relaxation \mathcal{L}_3 is stronger than \mathcal{L}_2 . It is also more difficult to solve.

4 p-Median solved by semi-Lagrangian relaxation

To solve the p-median problem by means of the semi-Lagrangian relaxation, we use the following general procedure.

Step 1 Solve the LR dual problem

$$(u^1, v^1) = \arg \max_{u,v} \mathcal{L}_1(u, v).$$

Let (x^1, y^1) be an optimal solution of (7) at (u^1, v^1) . If (x^1, y^1) is feasible to (6), STOP: (x^1, y^1) is an optimal solution to (6).

Step 2 Solve the intermediate dual problem by using (u^1, v^1) as starting point

$$(u^2, v^2) = \arg \max_{u,v} \mathcal{L}_2(u, v).$$

1. Let (x^2, y^2) be an optimal primal solution associated to (u^2, v^2) . If (x^2, y^2) is feasible to (6), STOP: (x^2, y^2) is an optimal solution to (6).
2. Let (\hat{x}^2, \hat{y}^2) be an heuristic solution for problem (6). If this heuristic solution closes the primal-dual gap, STOP: (\hat{x}^2, \hat{y}^2) is an optimal solution to (6).

Step 3 Solve the SLR dual problem by using (u^2, v^2) as starting point

$$(u^3, v^3) = \arg \max_{u,v} \mathcal{L}_3(u, v).$$

Let (x^3, y^3) be an optimal solution of (9) at (u^3, v^3) . If (x^3, y^3) is feasible (satisfies (6b-6c)), STOP: (x^3, y^3) is an optimal solution to (6).

Step 4 Compute $\mathcal{L}_3(u^4, v^4)$, with $u_i^4 = u_i^3 + \delta$, $v_i^4 = v_i^3 + \delta$, for a small and arbitrary positive perturbation δ ($i = 1, \dots, n$). Let (x^4, y^4) be an optimal solution of (9) at (u^4, v^4) . STOP: (x^4, y^4) is an optimal solution to (6).

Note the crucial role of Theorem 3 to ensure the convergence to an optimal primal-dual point (x^*, y^*, u^*, v^*) , either in step 3 or in step 4. In our computational experience (see section 5) we have never attained step 4 either because at step 3 we have obtained a primal optimal point or because the algorithm has been stopped because an excess of CPU time. However, in theory, (x^3, y^3) could be infeasible and then step 4 would be necessary.

In Step 2.2 we first use a simple heuristic method (*Heuristic 1*). If Heuristic 1 does not close the primal-dual gap, then we use a second and more sophisticated heuristic method (*Heuristic 2*). As Heuristic 1 we use the following simple method. We distinguish two cases after computing (x^2, y^2) : a) If the number of open medians is less than p , say p' , then we set as new medians the $p - p'$ most expensive customers. b) If the number of open medians is greater than p , say p'' , then we close the $p'' - p$ medians with least number of assigned customers. We reassign these customers to their closest open median. As Heuristic 2 we use the 'Variable Neighborhood Decomposition Search' (VNDS) (Hansen et al., 2001).

4.1 Solving the dual problems

The point is now how to solve the dual problems

$$\max_u \mathcal{L}_r(u) \quad r = 1, 2, 3, \quad (10)$$

associated to the semi-Lagrangian relaxation. For the sake of simple notation we drop the v component of $\mathcal{L}_r(u, v)$, $r = 1, 2, 3$, with no loss of generality. Functions $\mathcal{L}_r(u)$, $r = 1, 2, 3$, are implicitly defined as the pointwise minimum of linear functions in u . By construction they are concave and nonsmooth. In such case, the cutting plane method seems the best choice to solve (10).

In the cutting plane procedure, we consider a sequence of points $\{u^k\}_{k \in K}$ in the domain of $\mathcal{L}(u)$ (to ease notation we drop the r index of $\mathcal{L}_r(u)$). We denote s^k a subgradient of $\mathcal{L}(u)$ at u^k , that is, $s^k \in \partial \mathcal{L}(u^k)$, the subdifferential of $\mathcal{L}(u)$ at u^k (given that $\mathcal{L}(u)$ is concave, properly speaking we should use the terminology *supergradient* and *superdifferential*). We consider the linear approximation to $\mathcal{L}(u)$ at u^k , given by $\mathcal{L}^k(u) = \mathcal{L}(u^k) + s^k \cdot (u - u^k)$ and have

$$\mathcal{L}(u) \leq \mathcal{L}^k(u)$$

for all u .

The point u^k is referred to as a *query point*, and the procedure to compute the objective value and subgradient at a query point is called an *oracle*. Furthermore, the hyperplane that approximates the objective function $\mathcal{L}(u)$ at a feasible query point and defined by the equation $z = \mathcal{L}^k(u)$, is referred to as an *optimality cut*.

A lower bound to the maximum value of $\mathcal{L}(u)$ is provided by:

$$\theta_l = \max_k \mathcal{L}(u^k).$$

The *localization set* is defined as

$$L = \{(u, z) \in \mathbb{R}^{n+1} \mid u \in \mathbb{R}^n, \quad z \leq \mathcal{L}^k(u) \quad \forall k \in K, \quad z \geq \theta_l\}. \quad (11)$$

The basic iteration of a cutting plane method can be summarized as follows

1. Select (\bar{u}, \bar{z}) in the localization set L .
2. Call the oracle at \bar{u} . The oracle returns one or several cuts and a new lower bound $\mathcal{L}(\bar{u})$.
3. Update the bounds:
 - (a) $\theta_l \leftarrow \max\{\mathcal{L}(\bar{u}), \theta_l\}$.
 - (b) Compute an upper bound θ_u to the optimum¹ of problem (10).
4. Update the lower bound θ_l in the definition of the localization set (11) and add the new cuts.

¹For example, $\theta_u = \max\{z \mid (u, z) \in L \cap D\}$ where D is a compact domain defined for example by a set of lower and upper bounds for the components of u .

These steps are repeated until a point is found such that $\theta_u - \theta_l$ falls below a prescribed optimality tolerance. The reader may have noticed that the first step in the summary is not completely defined. Actually, cutting plane methods essentially differ in the way one chooses the query point. For instance, the intuitive choice of the Kelley point (\bar{u}, \bar{z}) that maximizes z in the localization set (Kelley, 1960) may prove disastrous, because it over-emphasizes the global approximation property of the localization set. Safer methods, as for example bundle methods (Hiriart-Urruty and Lemaréchal, 1996) or ProximalACCPM (Goffin et al., 1992; Goffin and Vial, 1999; du Merle and Vial, 2002), introduce a regularizing scheme to avoid selecting points too “far away” from the best recorded point. In this paper we use ProximalACCPM (*Proximal Analytic Center Cutting Plane Method*) which selects the *proximal analytic center* of the localization set. Formally, the proximal analytic center is the point (\bar{u}, \bar{z}) that minimizes the logarithmic barrier function² of the localization set plus a quadratic proximal term which ensures the existence of a unique minimizer³. This point is relatively easy to compute using the standard artillery of Interior Point Methods. Furthermore, ProximalACCPM is robust, efficient and particularly useful when the oracle is computationally costly —as is the case in this application.

4.2 Solving the oracle \mathcal{L}_2

Step 2 of the cutting plane method calls the oracle \mathcal{L} at \bar{u} . This amounts to compute $\mathcal{L}(\bar{u})$ and one $s \in \partial\mathcal{L}(\bar{u})$. In our case, this implies to solve the relaxed problems of section 3 (*solve the oracles*, in our terminology). Solving the oracle \mathcal{L}_2 is by no means a trivial matter. However, problem (8) has many interesting features that makes it possible to solve by a frontal approach with an efficient solver such as CPLEX. We can reduce the size of the problem and decompose it by taking into account the following three observations.

Our first observation is that all variables x_{ij} with reduced cost $c_{ij} - u_j \geq 0$ are set to zero (or simply eliminated). Associated to the p-median problem, there is a underlying graph with one link (i, j) connecting facility i with customer j , which has a positive cost c_{ij} . After the Lagrangian relaxation, the p-median graph may become very sparse, since only links (i, j) with negative reduced costs are kept in the graph.

Our second observation is that the above elimination of links in the p-median graph, not only reduces the problem size, but, may break the p-median graph into K smaller independent subgraphs. In that case, to compute $\mathcal{L}_2(u, v)$ we end up solving K independent subproblems. The important point is that the union of all these problems is much easier for CPLEX to solve than the larger instance collecting all the smaller problems into a single one. It seems that CPLEX does not detect this decomposable structure, while it is easy for the user, and almost costless, to generate the partition.

Our third observation is that if a column \bar{j} in the array $\{(c_{ij} - u_j)^-\}$ of negative reduced costs has a single negative entry $c_{i\bar{j}} - u_{\bar{j}}$, then we may enforce the equality $x_{i\bar{j}} = y_{\bar{i}}$.

²The logarithmic barrier for the half space $\{u \in \mathbb{R}^n \mid a \cdot u \leq b\}$ is $-\log(b - a \cdot u)$.

³That is, the proximal analytic center of \mathcal{L} is the point

$$(\bar{u}, \bar{z}) = \operatorname{argmin}_{u, z} F_{\mathcal{L}}(u, z) + \rho \|u - \hat{u}\|^2,$$

where $F_{\mathcal{L}}(u, z)$ is the logarithmic barrier for the localization set \mathcal{L} , ρ is the proximal weight, and \hat{u} is the proximal point (current best point).

4.3 Solving the oracle \mathcal{L}_3

Solving (9) is more challenging, though it just suffices to add the constraint $\sum_i y_i = p$ to (8). This certainly makes the problem more difficult for CPLEX. Moreover, this constraint links all blocks in the graph partition discussed above. This is particularly damaging if the partition contains many small blocks. When this situation occurs, it often appears that the solution (x^2, y^2) in Step 2 of our algorithm violates the constraint (9c) by few units, say 3, i.e.,

$$\sum y_i^2 = p + 3.$$

Let $I = \{1, \dots, n\} = \cup_{k=1}^K I_k$ be the partition resulting from the graph decomposition. (Note that one set, say I_K may collect all the indices of rows of the reduced cost matrix with no negative entry.) Let $p_k = \sum_{i \in I_k} y_k^2$. For each k we solve the subproblem associated with graph I_k , with the added constraint

$$\sum_{i \in I_k} y_k^2 \leq b_k,$$

for $b_k = p_k, p_k - 1, p_k - 2, p_k - 3$ (if b_k becomes zero or negative, we do not solve the corresponding subproblem). We then solve a knapsack auxiliary problem to combine the solutions of the independent blocks to generate an optimal solution to (9) (such that $\sum y_i^2 \leq p$).

5 Numerical experiments

The objective of our numerical experiments is threefold: first we wish to study the influence of using a good starting point in the expensive Oracle 2, second we study the solution quality of the semi-Lagrangian relaxation and third we will study the performance of this new approach.

To test the semi-Lagrangian relaxation we use data from the *traveling salesman problem* (TSP) library (Reinelt, 2001), to define p-median instances, as already used in the p-median literature (du Merle and Vial, 2002), especially in (Avella et al., 2003). In the tables of this paper the name of the instance indicates the number of customers (e.g. vm1748 corresponds to a p-median instance with 1748 customers).

Programs have been written in MATLAB 6.1 (Higham and Higham, 2000) and run in a PC (Pentium-IV, 2.4 GHz, with 6 Gb of RAM memory) under the Linux operating system. The program that solves Oracle 1 has been written in C. To solve Oracles 2 and 3 we have intensively used CPLEX 8.1 (default settings) interfaced with MATLAB (Tadonki, 2003; Musicant, 2000). To make our approach as general as possible, we have used the same set of parameters for ProximalACCPM in all the instances.

5.1 Influence of the starting point

Considering that Oracle 2 is a strengthened version of Oracle 1, our hypothesis is that the set of dual optimizers associated to Oracle 2 may be close to the optimal set associated to Oracle 1. As a matter of fact, in our tests we have observed that the more accurate

Table 1: Starting point accuracy: Optimal values. Labels ‘Low accuracy’ and ‘High accuracy’ correspond to use 10^{-3} and 10^{-6} respectively, in the stopping criterion when solving Oracle 1. (*) Optimal value not attained because an excess of CPU time.

Instance		Low accuracy		High accuracy	
Label	p	Oracle 1	Oracle 2	Oracle 1	Oracle 2
rl1304	100	491356.2	491639	491487.3	491639
rl1304	300	177270.5	177326	177317.4	177326
rl1304	500	96986.4	97024	97008.9	97024
fl1400	100	15946.3	15962	15960.6	15962
fl1400	200	8787.4	8806	8792.2	8806
u1432	20	588424.5	588766	588719.7	588766
vm1748	10	2979175.9	2983645	2982731	2983645
vm1748	20	1894608.6	(*)1899152	1898775.2	1899680
vm1748	50	1002392.9	1004331	1004205.2	1004331
vm1748	100	635515.8	636515	636324.1	636515
Average		789046.4	790317	790132.2	790369

the dual optimizer associated to Oracle 1, the easier the solving of the Oracle 2 dual problem. To illustrate this empirical observation we display the results obtained for a set of 10 medium p-median instances with data from the TSP library.

We compare the results obtained by using two different starting points for Oracle 2. In the first approach we use, as starting point, a low accuracy optimal point obtained by using Oracle 1 (ProximalACCPM stopping criterion threshold equal to 10^{-3}). In the second approach we use 10^{-6} . In the two cases the maximum number of Oracle 1 iterations has been set equal to 500.

In Table 1 we have the optimal values and in Table 2 the number of iterations and CPU time in seconds. We can observe that the extra iterations spent to compute an accurate starting point for the Oracle 2 is largely compensated by cutting down the number of very expensive Oracle 2 iterations. On average the ‘High accuracy’ approach is over six times faster (12030/1937) than the ‘Low accuracy’ one. For this reason, it is clear the advantage of using an accurate convex optimization method such ProximalACCPM in front of more approximative convex optimization methods such as the subgradient method.

5.2 ‘Easier’ instances

By ‘easier’ TSP instances we mean the instances that in (Avella et al., 2003) required less than 7500 seconds to be solved. The remaining instances, which required at least 28000 seconds, are called ‘difficult’ and studied in section 5.3. In this section we solve the ‘easier’ TSP instances. As we can see in Table 3, easier instances range from 1304 to 3795 customers and each problem is solved for different values of p . By no means these easier instances are easy since commercial solvers, as CPLEX, are able to solve instances up to 400 customers. The maximal CPU time CPU_{max} for each instance is

Table 2: Starting point accuracy: Iterations and CPU time (seconds). Labels ‘Low accuracy’ and ‘High accuracy’ correspond to use 10^{-3} and 10^{-6} respectively, in the stopping criterion when solving Oracle 1.

Instance		Low accuracy			High accuracy		
Label	p	Iter. Or. 1	Iter. Or. 2	CPU (s)	Iter. Or. 1	Iter. Or. 2	CPU (s)
rl1304	100	124	44	429	256	40	268
rl1304	300	88	16	26	161	8	20
rl1304	500	90	16	67	133	15	48
fl1400	100	107	15	886	442	13	572
fl1400	200	121	14	877	500	16	916
u1432	20	126	15	1548	346	9	192
vm1748	10	235	41	27774	500	21	3945
vm1748	20	220	100	82424	500	38	10768
vm1748	50	154	51	3675	462	19	551
vm1748	100	133	60	2596	500	40	2085
Average		140	30	12030	380	20	1937

set equal to the minimum between: ten times the reported CPU time in (Avella et al., 2003) for each case and 30000 seconds. The maximal number of Oracle 1 iterations is set equal to 500.

The main two factors to evaluate are first, the quality of the solutions, as expressed by the optimality gap and second, the computing time. Let us discuss first the issue of the quality of the solutions computed by the semi-Lagrangian relaxation. The averaged lower bounds are 485969.9 and 498392 for the Oracle 1 and Oracle 2 respectively. This shows that in general the semi-Lagrangian relaxation gives tighter dual bounds than the Lagrangian relaxation.

In most cases (see Tables 3 and 4) the procedure stops with an optimal integer solution obtained by Oracle 2. In few cases, the time limit is reached while solving Oracle 2. The use of a heuristic yields a bound on the integrality gap. We notice that the percentage of optimality is higher than 99.44%. The remaining cases concerns the use of Oracle 3. Indeed, Oracle 2 sometimes produces an integer solution that is feasible for all constraints but $\sum y_i = p$. If the heuristic does not produce an optimal integer solution, then we must resort to Oracle 3 which corresponds to the full semi-Lagrangian relaxation. Then, on the easier instances Oracle 3 always terminates with an optimal solution.

In summary, 28 of the 33 ‘easier’ instances (85%) are solved up to optimality by the semi-Lagrangian approach (label SLR in column ‘Upper bound/Method’). In the remaining instances (15%) we stopped the semi-Lagrangian procedure because of an excess of CPU time. Nevertheless, these instances are almost completely solved by computing a quasi optimal primal solution by using the VNDS heuristic (Hansen et al., 2001). For these instances, the solution quality is no worse than 99.44% of optimality gap. In (Avella et al., 2003) all these instances are fully solved (solution quality equal to 100% in all cases).

Table 3: Easier instances: Solution quality. Symbols: ‘Or.’ stands for Oracle, ‘VNDS’ for variable neighborhood decomposition search, ‘SLR’ for semi-Lagrangian relaxation. ‘% Optimality’ is computed as $100 \times [1 - (\text{‘optimal primal value’} - \text{‘optimal dual value’}) / \text{‘optimal dual value’}]$.

Instance		Lower bounds			Upper bound		Optimality (%)
Label	p	Or. 1	Or. 2	Or. 3	Value	Method	
rl1304	10	2131787.5	2133534	-	2134295	VNDS	99.96
rl1304	100	491487.3	491639	-	491639	SLR	100
rl1304	300	177317.4	177326	-	177326	SLR	100
rl1304	500	97008.9	97024	-	97024	SLR	100
fl1400	100	15960.6	15962	15962	15962	SLR	100
fl1400	200	8792.2	8806	8806	8806	SLR	100
u1432	20	588719.7	588766	-	588766	SLR	100
u1432	100	243741.0	243793	-	243793	SLR	100
u1432	200	159844.0	159885	-	160504	VNDS	99.61
u1432	300	123660.0	123689	123689	123689	SLR	100
u1432	500	93200.0	-	-	93200	VNDS	100
vm1748	10	2982731.0	2983645	-	2983645	SLR	100
vm1748	20	1898775.2	1899390	-	1899680	VNDS	99.98
vm1748	50	1004205.2	1004331	-	1004331	SLR	100
vm1748	100	636324.1	636515	-	636515	SLR	100
vm1748	300	286029.5	286039	-	286039	SLR	100
vm1748	400	221522.2	221526	-	221526	SLR	100
vm1748	500	176976.2	176986	176986	176986	SLR	100
d2103	10	687263.3	687321	-	687321	SLR	100
d2103	20	482794.9	482926	-	482926	SLR	100
d2103	200	117730.8	117753	-	117753	SLR	100
d2103	300	90417.2	90471	90471	90471	SLR	100
d2103	400	75289.3	75324	75324	75324	SLR	100
d2103	500	63938.4	64006	64006	64006	SLR	100
pcb3038	5	1777657.0	1777677	-	1777835	VNDS	99.99
pcb3038	100	351349.1	351461	-	353428	VNDS	99.44
pcb3038	150	280034.0	280128	-	280128	SLR	100
pcb3038	200	237311.0	237399	-	237399	SLR	100
pcb3038	300	186786.4	186833	-	186833	SLR	100
pcb3038	400	156266.6	156276	-	156276	SLR	100
pcb3038	500	134771.8	134798	-	134798	SLR	100
fl3795	400	31342.5	31354	-	31354	SLR	100
fl3795	500	25972.0	25976	25976	25976	SLR	100
Average		485969.9	498392		369916		99.97

The performance of the semi-Lagrangian relaxation for this test can be found in Table 4. On average, the number of ProximalACCPM iterations is 372, 19 and 0.5, for the Oracles 1, 2 and 3 respectively. As we have seen in Section 5.1, the use of an effective convex optimization solver, as ProximalACCPM, is important to limit the number of calls to the very expensive Oracle 2 (19 calls on average). Oracle 3 is called 2 times at most. A possible explanation for this low number of Oracle 3 calls, is that Oracle 2 and 3 are very similar (only differ in one single constraint), then the optimal dual solution associated to Oracle 2 should be close to U^* , the optimal set for the semi-Lagrangian relaxation. As we have seen in Corollary 2.1, U^* is an unbounded set and therefore it should not take too many iterations to find one of the infinitely many optimal solutions, once we are close to U^* .

On average, the CPU time is 107 s, 2318 s and 448 s for the Oracles 1, 2 and 3 respectively, which shows that most of the time is expended with the Oracle 2. The average CPU time for the semi-Lagrangian relaxation is 2876 s which is 3.68 times⁴ the averaged CPU time reported in (Avella et al., 2003). Two main reasons may explain this difference in performance. First, in (Avella et al., 2003) the polyhedral structure of the p-median problem is exploited in a branch-cut-and-price (BCP) algorithm. In contrast, our algorithm is based on the semi-Lagrangian relaxation, a general purpose simple method independent of the p-median problem. Second, in (Avella et al., 2003) the code was written in C, a compiled language, whereas our code is written in Matlab, an interpreted language (although our oracles are coded in C).

Each time we call Oracle 2, we solve a relaxed facility location problem. For most Oracle 2 calls the underlying graph is disconnected and then CPLEX solves as many subproblems as the number of graph components. In column ‘ANSO2’ we have the ‘average number of subproblems per Oracle 2 call’. The averaged ANSO2 is 31 subproblems, that is, on average, each time we call Oracle 2, we solve 31 independent combinatorial subproblems.

In general, the difficulty to solve the Oracle 2 increases with the problem size but decreases with the ANSO2. Clearly ANSO2 is a critical parameter. Thus for example in Tables 3 and 4 we can see that our procedure fails to completely solve the smallest reported problem (rl1304 with $p = 10$) within the time limit because its ANSO2 is 1. Nevertheless, the computed solution is 99.96% optimal. On the other extreme, one of the biggest reported instance (fl3795 with $p = 400$) is fully solved by our procedure because its ANSO2 is 26.

5.3 Difficult instances

In the previous section we have seen that the semi-Lagrangian relaxation is more an innovative integer programming technique to be developed than an actual alternative to the branch-cut-and-price (BCP) techniques. Nevertheless, in this section we will see that for the instances not solved by (Avella et al., 2003) (we call them *difficult instances*), the performance of the SLR procedure is similar. The maximal CPU time and maximal number of Oracle 1 calls are set equal to 360000 seconds and 1000 calls, respectively.

⁴This time ratio has been scaled taking into account that in (Avella et al., 2003) the authors use a Pentium IV-1.8 GHz, whereas we use a Pentium IV-2.4 GHz, that is, $(2873/1041) \times (2.4/1.8) = 3.68$.

Table 4: Easier instances: Performance. Symbols: ‘Or.’ stands for Oracle, ‘ANSO2’ for average number of subproblems per Oracle 2 call, (*)‘Total CPU time’ includes 100 seconds of the VNDS heuristic.

Instance		Oracle calls			ANSO2	CPU time (seconds)				
Label	p	Or. 1	Or. 2	Or. 3		Or. 1	Or. 2	Or. 3	SLR	BCP ^a
rl1304	10	390	35	0	1	95	17141	0	(*)17336	1614
rl1304	100	256	40	0	11	26	242	0	268	40
rl1304	300	161	8	0	69	11	9	0	20	18
rl1304	500	133	15	0	143	8	40	0	48	20
fl1400	100	442	13	2	28	89	483	558	1130	378
fl1400	200	500	16	2	48	119	797	5384	6300	191
u1432	20	346	9	0	1	54	138	0	192	101
u1432	100	297	21	0	2	36	940	0	976	119
u1432	200	500	21	0	5	114	1219	0	(*)1433	58
u1432	300	500	26	1	19	112	310	78	500	43
u1432	500	158	2	0	11	11	362	0	(*)473	36
vm1748	10	500	21	0	1	174	3771	0	3945	478
vm1748	20	500	23	0	1	162	5045	0	(*)5307	341
vm1748	50	462	19	0	2	152	399	0	551	36
vm1748	100	500	40	0	4	157	1928	0	2085	136
vm1748	300	230	25	0	51	30	39	0	69	24
vm1748	400	158	7	0	93	16	24	0	40	155
vm1748	500	146	15	2	131	14	61	22	97	74
d2103	10	241	7	0	2	41	504	0	545	260
d2103	20	389	11	0	2	109	2682	0	2791	733
d2103	200	500	27	0	20	155	2178	0	2333	1828
d2103	300	500	23	1	26	146	1465	535	2146	1133
d2103	400	500	17	1	37	145	618	1426	2189	235
d2103	500	500	26	2	39	143	10086	4309	14538	5822
pcb3038	5	341	5	0	1	111	1888	0	(*)2099	1114
pcb3038	100	464	21	0	2	188	32714	0	(*)33002	7492
pcb3038	150	500	11	0	2	202	11292	0	11494	3057
pcb3038	200	500	12	0	5	201	11792	0	11993	2562
pcb3038	300	446	16	0	12	166	3853	0	4019	2977
pcb3038	400	330	14	0	24	99	2874	0	2973	454
pcb3038	500	211	17	2	38	56	3269	3325	3325	704
fl3795	400	500	24	0	26	254	2218	0	2472	6761
fl3795	500	500	38	1	25	259	2531	3008	3008	770
Average ^b		372	19	0.5	31	107	2318	448	2873	1041

^aTimes were obtained with a processor Pentium IV-1.8 GHz. We use a Pentium IV-2.4 GHz.

^bAverage figures do not take into account the 5 problems not solved up to optimality (see Table 3).

Table 5: Difficult instances: Lower bounds.

Instance		Lower bounds				
Label	p	Or. 1	Or. 2	Or. 3	SLR	BCP
f1400	300	6091.8	6109	6109	6109	6099
f1400	400	4635.4	4648	-	4648	4643
f1400	500	3755.7	3764	3764	3764	3760
u1432	50	361683.6	362005	362057	362057	362072
u1432	400	103403.8	103623	-	103623	103783
d2103	50	301565.4	301705	-	301705	301618
d2103	100	194390.1	194495	-	194495	194409
f3795	150	65837.6	65868	-	65868	65868
f3795	200	53908.9	53928	53928	53928	53928
f3795	300	39576.7	39586	-	39586	39586
Average		113484.9	113573		113578	113577

Table 6: Difficult instances: Best integer solution.

Instance		Best integer solution			% Optimality	
Label	p	Method	SLR	BCP	SLR	BCP
f1400	300	VNDS	6146	6111	99.39	99.80
f1400	400	H1	4648	4648	100	99.89
f1400	500	H1	3765	3764	99.97	99.89
u1432	50	VNDS	362100	362072	99.97	100
u1432	400	VNDS	104735	103979	98.93	99.81
d2103	50	VNDS	302916	302337	99.60	99.76
d2103	100	VNDS	195273	194920	99.60	99.74
f3795	150	SLR	65868	65868	100	100
f3795	200	SLR	53928	53928	100	100
f3795	300	SLR	39586	39586	100	100
Average			113897	113721	99.74	99.89

Regarding the quality of the (dual) lower bounds, Table 5 shows that except for problem u1432, the SLR lower bounds are equal or tighter than the BCP bounds. Regarding the quality of the best integer solution, Table 6 shows that in cases of partial optimality, the heuristic used in (Avella et al., 2003) outperforms heuristics we have used (H1 and VNDS). No method has solved up to optimality problem f1400 with $p = 500$, but our lower bound 3764 combined with the upper bound in (Avella et al., 2003) solves the problem.

Tables 7 and 8 display the number of oracle calls, the average number of subproblems per Oracle 2 call (ANSO2) and the computing times. Both methods have fully solved four of the ten difficult problems. Even considering that our computer is about 33% faster, it is remarkable the SLR time for instances f3795 and especially instance f1400 ($p=400$). The reason for this very good performance probably is the high ANSO2 coefficients. However, a high ANSO2 coefficient is not enough to guarantee a good SLR performance. See for example the unsolved instance f400 ($p=500$) which has the highest ANSO2 coefficient (145).

Table 7: Difficult instances: Oracle calls and average number of subproblems in Oracle 2.

Instance		Oracle calls			ANSO2
Label	p	Or. 1	Or. 2	Or. 3	
f1400	300	261	16	1	82
f1400	400	196	17	0	100
f1400	500	218	16	1	145
u1432	50	423	26	15	1
u1432	400	1000	16	0	29
d2103	50	741	2	0	3
d2103	100	1000	5	0	8
f3795	150	1000	27	0	17
f3795	200	1000	32	3	16
f3795	300	1000	15	0	26
Average		684	17	2	43

Table 8: Difficult instances: CPU time.

Instance		CPU time (seconds)				
Label	p	Or. 1	Or. 2	Or. 3	SLR	BCP
f1400	300	27	2632	357341	360000	360000
f1400	400	16	652	0	678	360000
f1400	500	20	261715	98265	360000	360000
u1432	50	80	135331	224589	360000	28257
u1432	400	856	359144	0	360000	360000
d2103	50	476	359524	0	360000	360000
d2103	100	928	359072	0	360000	360000
f3795	150	1100	39199	0	40299	346396
f3795	200	1459	32975	30125	64559	84047
f3795	300	1266	2264	0	3530	53352
Average		623	155251	71032	226907	267205

6 Conclusion

In this paper we have introduced the semi-Lagrangian relaxation (SLR) which applies to combinatorial problems with equality constraints. In theory it closes the integrality gap and produces an optimal integer solution. This approach has a practical interest if the relaxed problem (oracle) becomes more tractable than the initial one.

We applied this concept to the p-median problem. In that case, the oracle is much easier than the original problem: its size is drastically reduced (most variables are automatically set to zero) and it is often decomposable. The SLR approach has solved most of the tested large-scale p-median instances exactly. This fact is quite remarkable. Of course, the oracle for the strong relaxation is difficult and time consuming, but it is still easy enough to be tackled directly by a general purpose solver such as CPLEX. In sharp contrast, CPLEX is unable to solve these problems in their initial formulation if the size exceeds 400 customers.

The SLR has two interesting features from a computational point of view: First, the SLR is easily parallelizable (one combinatorial subproblem per processor). Second, in contrast with sophisticated branch-cut-and-price codes, the updating of our SLR implementation would be costless, since the complex tasks are fully performed by standard tools (CPLEX and ProximalACCPM). Any improvement on these tools or similar, could be incorporated without further programming effort.

On the other hand, the relative ease in solving the integer programming subproblems is not sufficient to allow the use of the convex optimization solvers that are commonly used in connection with the standard Lagrangian relaxation or column generation scheme. We believe that a subgradient method or Kelley's cutting plane method, would entail too many queries to the oracle to make the approach workable. The use of an advanced convex solver, such as ProximalACCPM, is a must; it turns out that this solver is efficient enough to solve in a short time all the instances we have examined.

This new approach opens the road for further investigations. The SLR of the p-median problem is a special variant of the uncapacitated facility location (UFL) problem, with a profit maximizing objective and the additional property that not all customers need to be served. Moreover, the underlying graph of this UFL may be (massively) sparse and disconnected. Those characteristics are attractive enough to justify the search for a dedicated exact algorithm and for powerful and fast heuristics. Progresses in that direction could make the new approach more competitive.

Acknowledgments

We would like to thank professors Pierre Hansen, Nenad Mladenovic and Dionisio Perez-Brito for the use of its VNDS p-median FORTRAN code (Hansen et al., 2001), which has acted as a fine complement to the semi-Lagrangian relaxation. We also thank Olivier du Merle for the use of its C code used to solve the Oracle 1.

References

- Avella, P. and Sassano, A. (2001). On the p-median polytope. *Mathematical Programming*, 89:395–411.
- Avella, P., Sassano, A., and Vasil'ev, I. (2003). Computational study of large-scale

- p-median problems. Technical report, dipartimento di informatica e sistemistica, Università di Roma "La Sapienza".
- Balas, E. and Padberg, M. (1976). Set partitioning: a survey. *SIAM Review*, 18:710–760.
- Briant, O. and Naddef, D. (2004). The optimal diversity management problem. *Operations research*, 52(4).
- Christofides⁷⁵ (1975). *Graph theory: an algorithmic approach*. Academic Press, New York.
- de Farias, I. R. J. (2001). A family of facets for the uncapacitated p-median polytope. *Operations research letters*, 28:161–167.
- du Merle, O. and Vial, J.-P. (2002). Proximal accpm, a cutting plane method for column generation and lagrangian relaxation: application to the p-median problem. Technical report, Logilab, HEC, University of Geneva.
- Geoffrion, A. M. (1974). Lagrangean relaxation for integer programming. *Mathematical Programming Study*, 2:82–114.
- Goffin, J. L., Haurie, A., and Vial, J. P. (1992). Decomposition and nondifferentiable optimization with the projective algorithm. *Management Science*, 37:284–302.
- Goffin, J.-L. and Vial, J. (1999). Convex nondifferentiable optimization: a survey focussed on the analytic center cutting plane method. Technical Report 99.02, Geneva University - HEC - Logilab.
- Guignard, M. and Kim, S. (1987). Lagrangean decomposition: a model yielding stronger Lagrangean bounds. *Mathematical Programming*, 39:215–228.
- Hansen, P. and Jaumard, B. (1997). Cluster analysis and mathematical programming. *Mathematical programming*, 79:191–215.
- Hansen, P., Mladenovic, N., and Perez-Brito, D. (2001). Variable neighborhood decomposition search. *Journal of Heuristics*, 7:335–350.
- Higham, D. J. and Higham, N. J. (2000). *MATLAB guide*. SIAM, Philadelphia, Pennsylvania, USA.
- Hiriart-Urruty, J. B. and Lemaréchal, C. (1996). *Convex Analysis and Minimization Algorithms*, volume I and II. Springer-Verlag, Berlin.
- Kariv, O. and Hakimi, L. (1979). An algorithmic approach to network location problems. ii: the p-medians. *SIAM Journal of Applied Mathematics*, 37(3):539–560.
- Kelley, J. E. (1960). The cutting-plane method for solving convex programs. *Journal of the SIAM*, 8:703–712.
- Lemaréchal, C. and Renaud, A. (2001). A geometric study of duality gaps, with applications. *Mathematical Programming*, Ser. A 90:399–427.
- Mulvey, J. M. and Crowder, H. P. (1979). Cluster analysis: an application of lagrangian relaxation. *Management Science*, 25:329–340.
- Musicant, D. R. (2000). Matlab/cplex mex-files. www.cs.wisc.edu/~musicant/data/cplex/.
- Reinelt, G. (2001). Tsplib. <http://www.iwr.uni-heidelberg.de/groups/comopt/software/TSPLIB95>.
- Tadonki, C. (2003). Using cplex with matlab. http://www.omegacomputer.com/staff/tadonki/using_cplex_with_matlab.htm.